

**Photos Showing Current Condition
of the
Brick Tavern Museum of the Schuyler County Historical Society**



Museum from the Northwest



Museum from the Southwest



Museum from the Southeast



Museum from the Northeast



Typical wall condition of Museum.



View down front sidewalk.



Typical wall conditions.

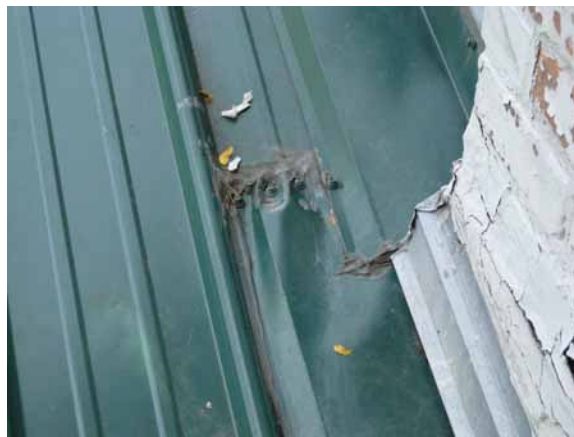


Condition of historic shutters

Roofing Issues of the Brick Tavern Museum



Main roof looking northeast. Note sag in ridge.



Dependence on short-lived tar for waterproofing at exposed fasteners.



Membrane roofing at porch and southeast addition.



Typical open seam at membrane roofing.



Light-gauge coping cover. Note tear in aluminum at bend and lack of counter flashing.



Worn out South porch roofing.